

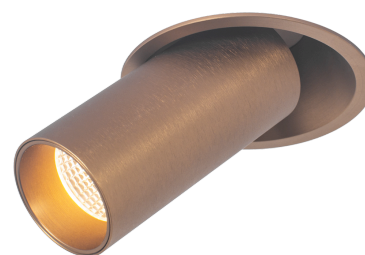
# Fuoco Move Out CNC, Light Bronze, 3000K, Phase cut

Product Coded  
FMO-LB103D

<https://purati.com/product/fuocomoveoutcnc/>

## DESCRIPTION

The Fuoco Move Out Downlight offers both accent and general lighting with 355° rotation and 45° tilt. Designed to provide a high level of visual comfort with an outstanding colour performance CRI>97, they can be used for home and presentations, in retail situations, or in museums.



## QUICKINFO

### GENERAL

Finish	Light Bronze
Material	Powder Coated Aluminium
IP	20
Lifespan	L90/50,000h
Warranty	5 years

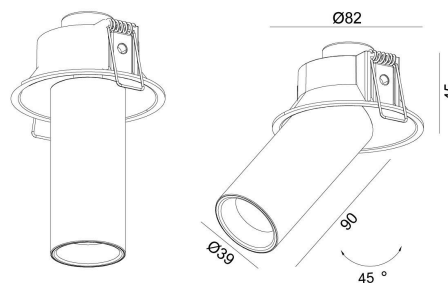
### LED

Lumen	600lm
CCT	3000K
CRI	>97
SDCM	<2
UGR	<19
Beam angles	15°/24°/36°/60°

### ELECTRICAL

Voltage	220-240V
Power	10W
Driver (Built-in)	Phase cut

CRI >97	SDCM <2	IP20	 5 years
------------	------------	------	--



Ø75mm 5-25mm

## PURATI PTY LTD

Unit 10, 80 O'Riordan St, Alexandria NSW 2015

Tel: +61 2 8065 8181 [sales@purati.com](mailto:sales@purati.com)